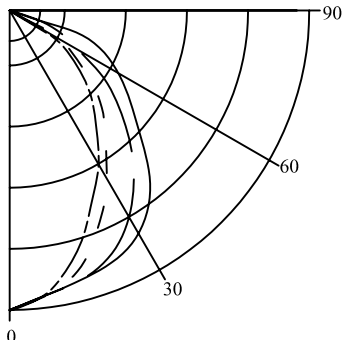


T58 HO / VHO Hi-Bay

Surface / Pendant

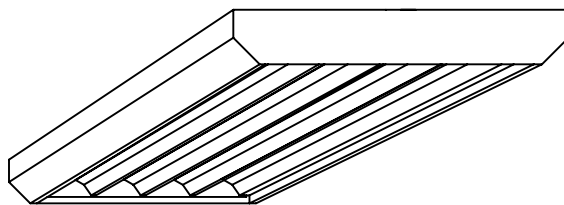
Manufacturing, Warehouse, Retail, Commercial, Gymnasium



coefficients of utilization — zonal cavity method

RC	0.9			0.8			0.7			
	RW	0.7	0.5	0.3	0.7	0.5	0.3	0.7	0.5	0.3
0	113	113	113	110	110	110	108	108	108	
1	109	105	102	103	100	97	99	96	94	
2	101	94	88	92	87	82	89	84	81	
3	93	84	77	83	76	71	80	75	70	
4	86	76	68	74	67	62	72	66	61	
5	79	68	60	67	59	53	65	58	53	
6	73	61	53	60	52	47	58	52	46	
7	68	55	47	54	47	41	53	46	41	
8	62	50	42	49	41	36	48	41	36	
9	58	45	37	44	37	31	43	36	31	
10	53	41	33	40	33	28	39	32	28	

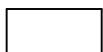
Luminaire: T582224120PS
 Total Lamp Lumens: 10560
 Luminaire Efficiency: 92.62%



FIXTURE TYPE	VOLTS
JOB INFORMATION	

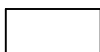
Ordering Information

T58



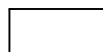
Nominal Size

- 12 = 12X48 2LT
- 14 = 14X48 3LT
- 17 = 17X48 4LT
- 18 = 12X96 4LT (tandem)
- 19 = 19X48 5LT
- 22 = 24X24 6LT (2' LAMP)
- 24 = 24X48 6LT
- 26 = 17X60 4LT
- 27 = 30X48 8LT
- 28 = 24x96 4LT
- 29 = 17x96 8LT (tandem)



Lamp

- 24 = T5 24w HO (*)
- 39 = T5 39w HO (*)
- 54 = T5 54w HO (*)
- 84 = T8 84w VHO (t)
- 95 = T5 95w VHO (t)



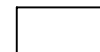
Voltage

- 120 (*)
- 277 (*)
- 347 (*)
- 480 (t)

PS

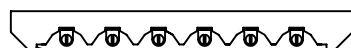
Ballast

PS = Program Start

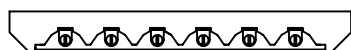


Options

- AL = Acrylic Lens
- DF = Door Frame
- LP = Lamps Installed
- OS = Occupancy Sensor
- PL = 1/16" Polycarbonate Lens
- 9WG = 9 GA Wire Guard
- 6WG = 6 GA Wire Guard
- SM = Stem Mount
- Consult factory for other options



Shown with optional wire guard

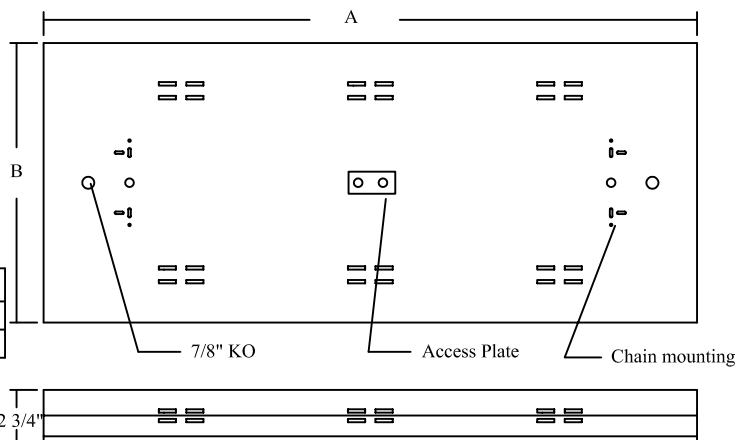


Nominal Dimensions

Model	12	14	17	19	22	24	26	27	28	29
A	48"	48"	48"	48"	24"	48"	60"	48"	96"	96"
B	12"	14"	17"	19"	24"	24"	17"	30"	24"	17"

Dimensions subject to change without notice

Custom Sizes Available



SPECIFICATIONS

Materials: Chassis - 20 gauge cold rolled steel.

Unitized Reflector - 28 gauge Specular aluminum.

Finish: Chassis Exterior - white baked enamel.

Electrical: Thermally protected class "P" ballast Sound Rated "A" C.B.M. approved. Non PCB. If K.O. is within 3" of ballast, use wire suitable for at least 90degrees.

Minimum starting temperature -20°F

Labels: cUL Listed