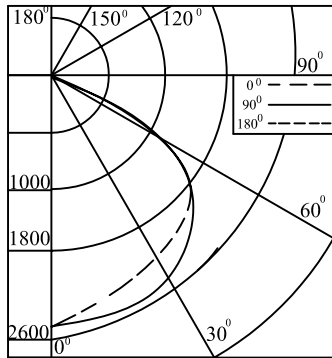


TS"D" SURFACE MOUNT

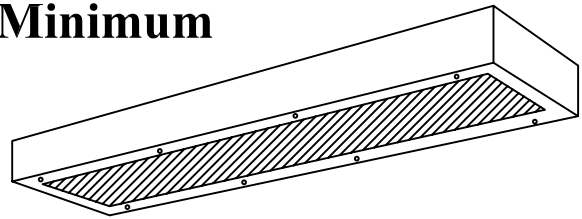
Super Max / Maximum / Medium / Minimum



coefficients of utilization — zonal cavity method

	RF	20	20	20
RC	80	80	70	50
RW	70	50	30	50
1	64	61	59	60
2	58	54	50	53
3	53	47	43	46
4	49	42	37	41
5	45	37	32	37
6	41	33	28	33
7	38	30	25	29
8	35	27	22	26
9	32	24	19	24
10	30	22	17	22

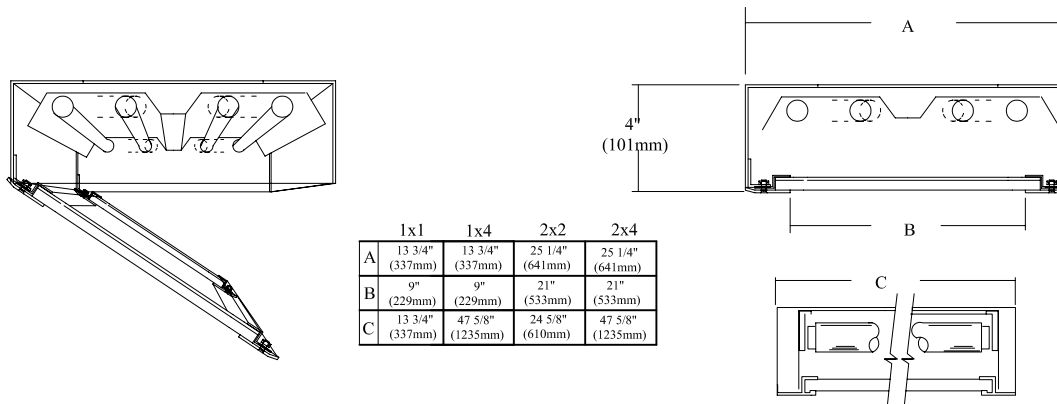
2 lamp 2' 120V energy saving T12



FIXTURE TYPE	VOLTS
JOB INFORMATION	

Ordering Information

TS	D								
Surface Mount	Nominal Size	Lens Type	Overlay Lens	Lamp Quantity	Lamp	Voltage	Ballast	Options	
	11 = 1x1 12 = 1X2 14 = 1x4 22 = 2x2 24 = 2x4	S = Super Max X = Maximum D = Medium N = Minimum	12 = 1/8 Acrylic 15 = 0.152 Polycarb 18 = 0.187 Polycarb	1 2 3 4	14W 28W 17W 32W 21W 35W 24W 39W 25W 54W	120V 277V 347V	IS = Instant Start PS = Programed Start RS = Rapid Start	AH = Allen Head Screw EB = Emergency Battery NL = Night Light PO = Polycarbonate Overlay TG = Temper Glass For other options Consult factory	



dimensions subject to change without notice

SPECIFICATIONS

Performance: Installation of a 2 lamp 40W luminaries in a room cavity ratio of 1, with reflectance of 80% ceiling, 50% wall and 20% floor, the C.U. shall not be less than .54

Materials: Chassis - 14 gauge cold rolled steel. Maximum, Medium and Minimum.
 Door Frame - 14 gauge cold rolled steel with all seams welded and ground smooth and secured with allenhead center pin hardened steel tamperproof flush captive bolts to assure a tight seal against the mounting surface. Designed to assure a tight seal against mounting surface to eliminate contraband hiding places. Steel piano hinge.
 Mounting Pan - 16 gauge cold rolled steel.
 Unitized Reflector - 20 gauge cold rolled steel supports all electrical components.
 Shielding - S = .500 ultraviolet stabilized polycarbonate with .125" prismatic acrylic overlay
 X = .250" ultraviolet stabilized polycarbonate with .125" prismatic acrylic overlay
 D = .250" ultraviolet stabilized polycarbonate with .125" prismatic acrylic overlay
 N = .140 KSH -12 Acry-Tuf.L3
 Shielding secured with 14 gauge cold rolled steel continuous rails on all four sides.

Finish: Chassis Exterior - white baked enamel.

Electrical: Thermally protected class "P" ballast C.B.M. approved. Non PCB. If K.O. is within 3" of ballast, use wire suitable for at least 90degrees.

Labels: cUL Listed